

For Lease | Runway Business Park  
**FLEX WARHOUSE SPACE**

4600 Regions Park Drive  
Fort Smith, AR



**Moses Tucker**  
**PARTNERS**

479.271.6118 | [mosestucker.com](http://mosestucker.com)



Eric Nelson  
Principal & Vice President of Brokerage  
501.951.1802  
[enelson@mosestucker.com](mailto:enelson@mosestucker.com)

## Offering Summary

AVAILABLE SIZES:	± 2,300 SF, 3,325 SF & 4,460 SF
LEASE RATES:	2,300 SF - \$2,000/Month (\$10.43/SF) 3,325 SF - \$3,000/Month (\$10.83/SF) 4,460 SF - \$4,000/Month (\$10.76/SF)
LEASE TYPE:	NNN

---

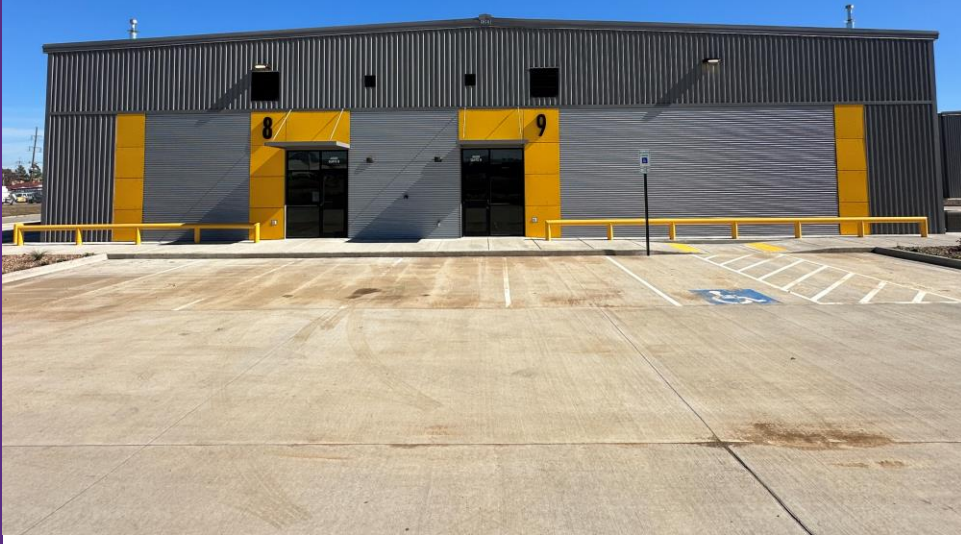
## Property Highlights

- New construction flex development
- Less than 1 mile from I-540
- Units have 20' eave height
- Heated and cooled office/showroom and bathroom
- Mezzanine above office for extra storage
- Warehouse space is heated
- 16' x 16' garage doors
- Adequate maneuverability for a semi-truck
- On-site parking available



# Property Renderings

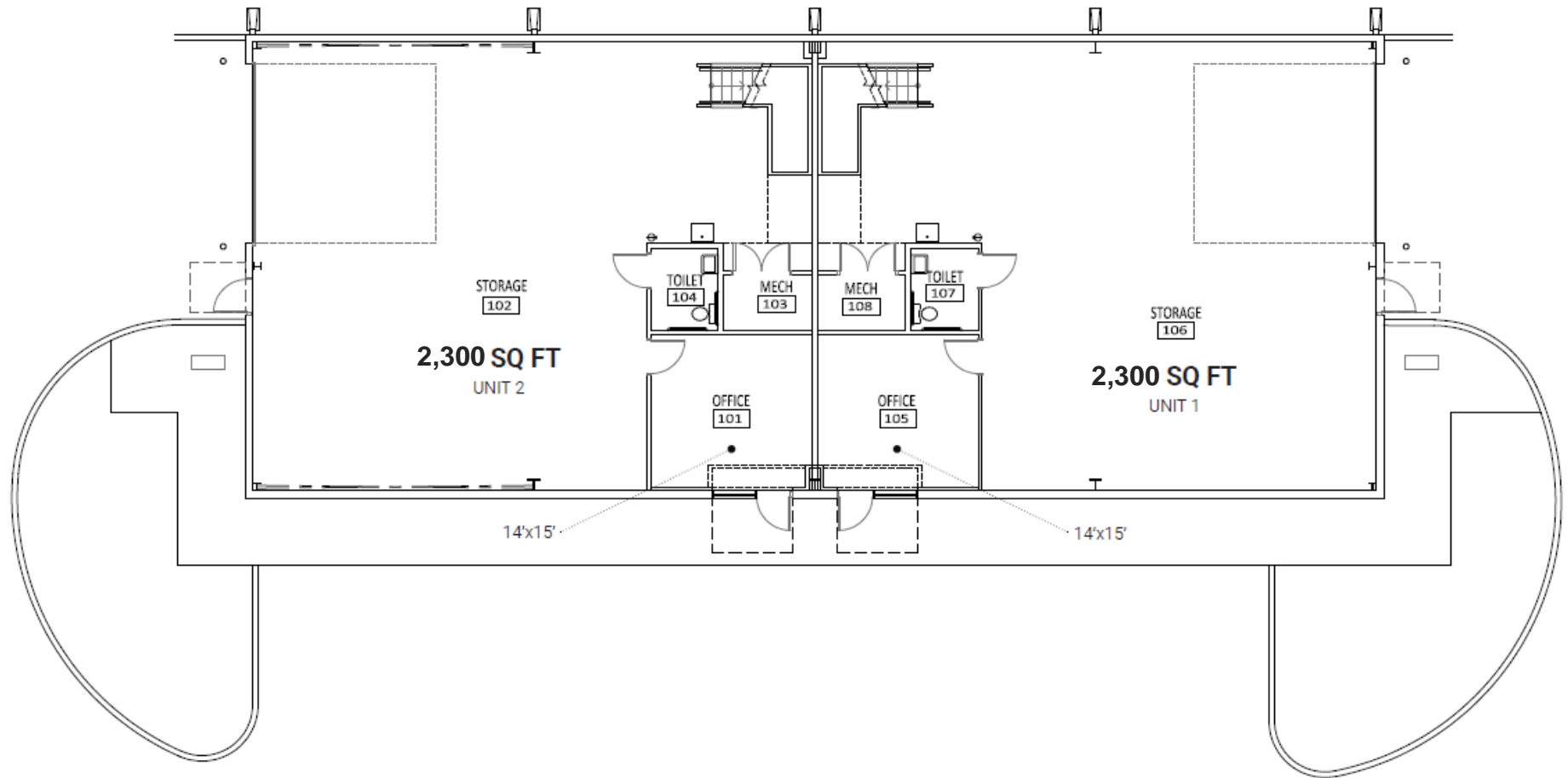
Runway Business Park





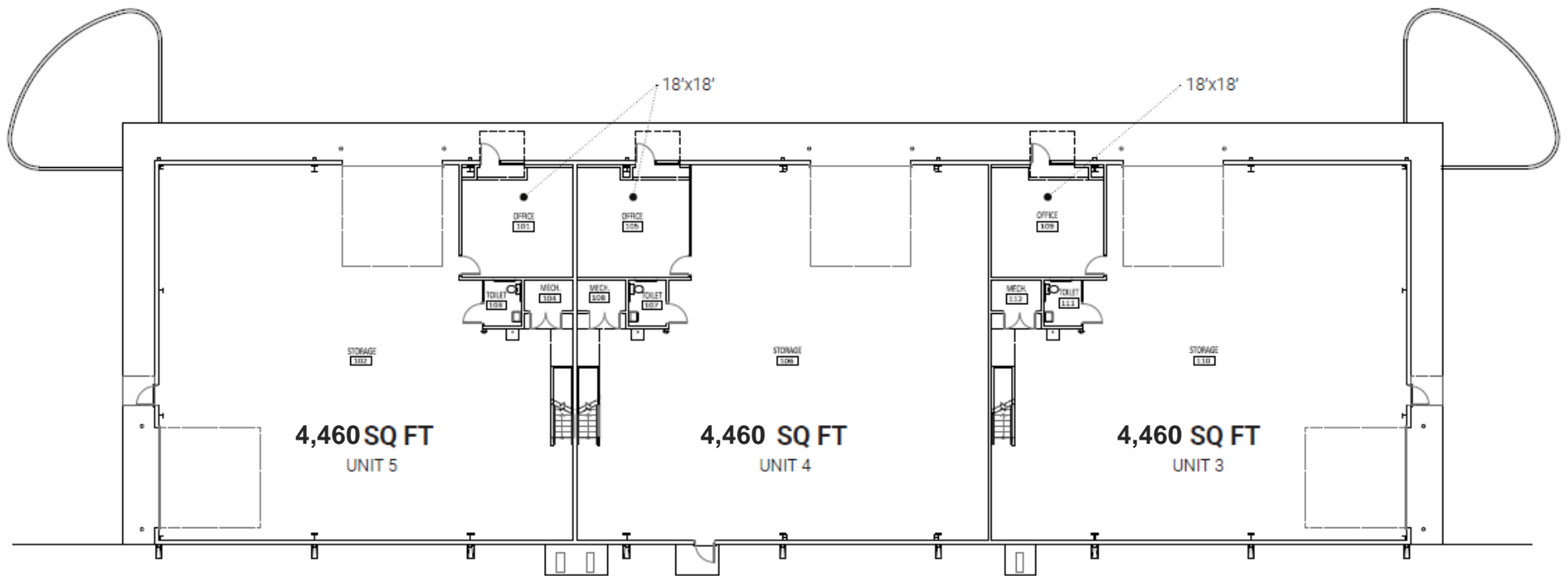
# Floor Plan

Units 1 - 2



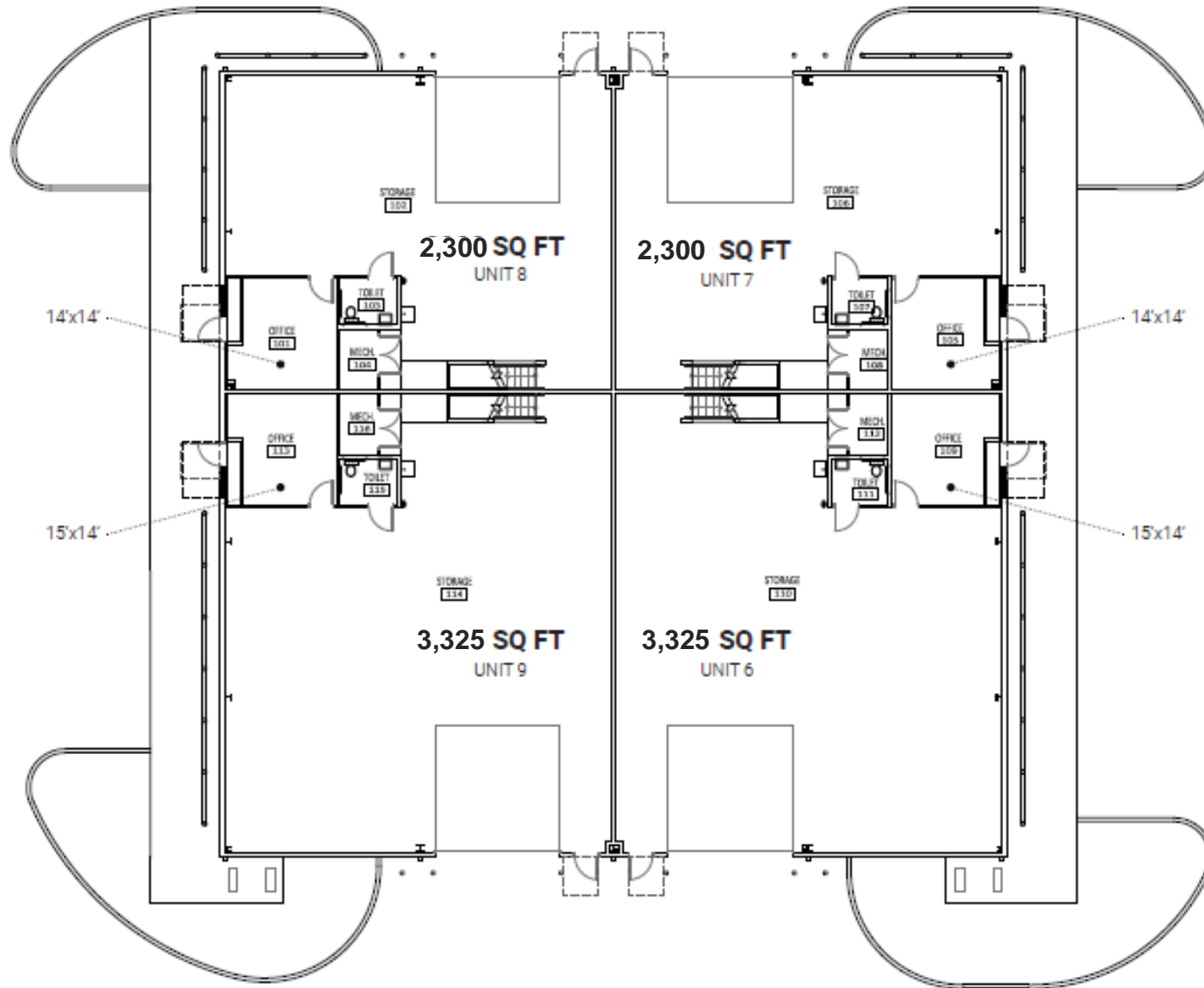
# Floor Plan

Units 3 - 5



# Floor Plan

Units 6 - 9

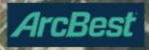




Rogers Ave



Extension



Arkansas National Guard



Fort Chaffee  
**Runway Business Park**  
4600 Regions Park Drive





# Moses Tucker PARTNERS

---

## Little Rock

HEADQUARTERS

200 River Market Ave

Suite 300

Little Rock, AR 72201

501.376.6555

## Bentonville

BRANCH OFFICE

805 S Walton Blvd

Suite 123

Bentonville, AR 72712

479.271.6118

---

## FOR MORE INFORMATION CONTACT:

**Eric Nelson**

Principal & Vice President of Brokerage

501.951.1802

[enelson@mosestucker.com](mailto:enelson@mosestucker.com)

## DISCLAIMER

Moses Tucker Partners represents the owner of the property represented herein. Although all information furnished regarding property for sale, rental, or financing is from sources deemed reliable, such information has not been verified and no express representation is made nor is any to be implied as to the accuracy thereof and it is submitted subject to errors, omissions, change of price, rental or other conditions, prior sale, lease or financing, or withdrawal without notice and to any special conditions imposed by our principal.

**Commercial Real Estate**

**479.271.6118 | [mosestucker.com](http://mosestucker.com)**